

# Automate Glass Fragmentation Analysis and Improve Quality with TemperCHECK

TemperCHECK is a portable, reliable and easy to use automated glass fragmentation analyzer that reduces testing time and improves accuracy so you can improve quality.

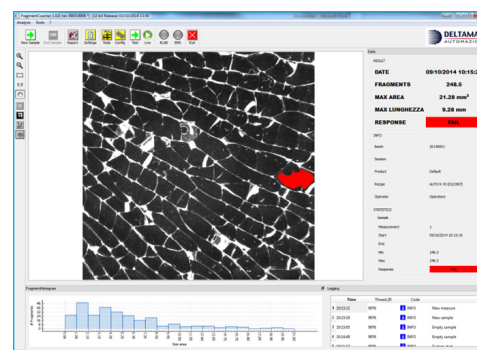
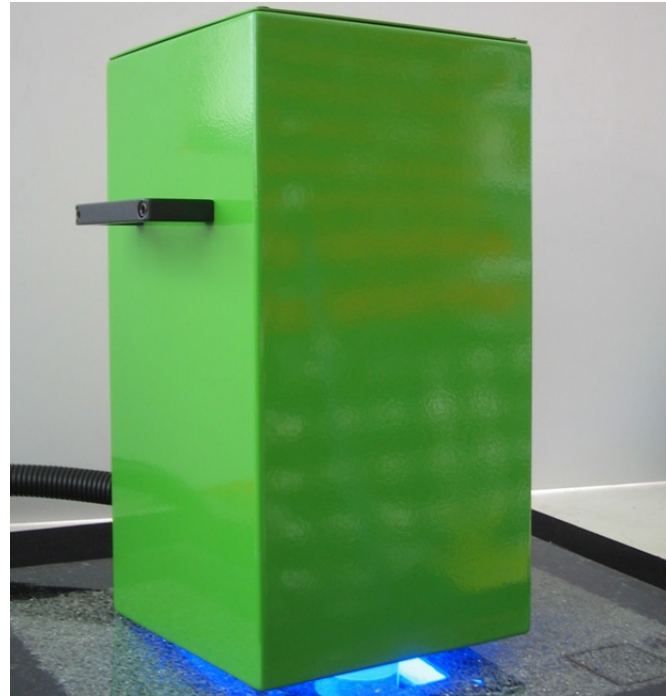
Following industry specifications or parameters set by the operator for a customer, TemperCHECK identifies the ten largest fragments and calculates their combined weight. It displays results in real time and works with all glass types, including opaque glass.

For each test, TemperCHECK does multiple scans. It stores the scanned images and results and enables you to search for specific results for individual tests and perform customized reporting and statistical analysis.

TemperCHECK was developed by DeltaMax Automazione of Italy, which has 25 years of experience in industrial automation, vision and glass quality systems. TemperCHECK is sold in North America by Integrated Automation Systems.

## TemperCHECK Features

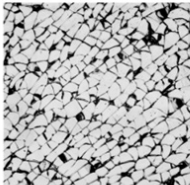




- ✓ Portable and compact
- ✓ User friendly interface
- ✓ Works with all glass types including non-transparent
- ✓ Real time results display
- ✓ Customizable inspection parameters
- ✓ Detects fragment number and size
- ✓ Analyzes fragment size distribution
- ✓ Identifies the ten largest fragments and calculates their combined weight
- ✓ Compares results with industry specifications, including those for North America, and customer-specific rules
- ✓ Stores results and provides the capability to search stored images and results and perform customizable reports and statistical analysis

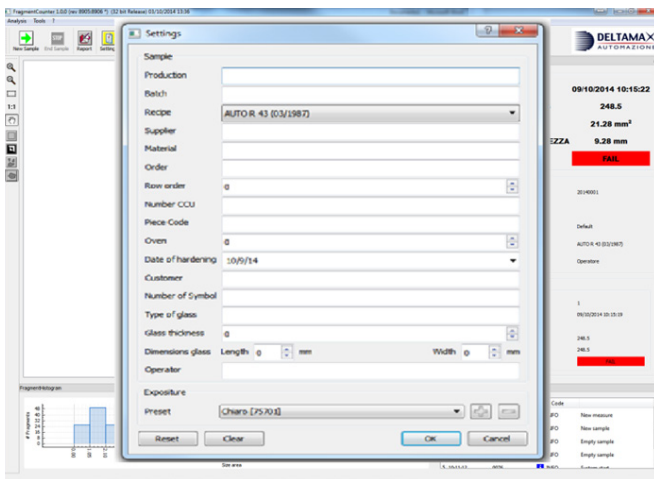
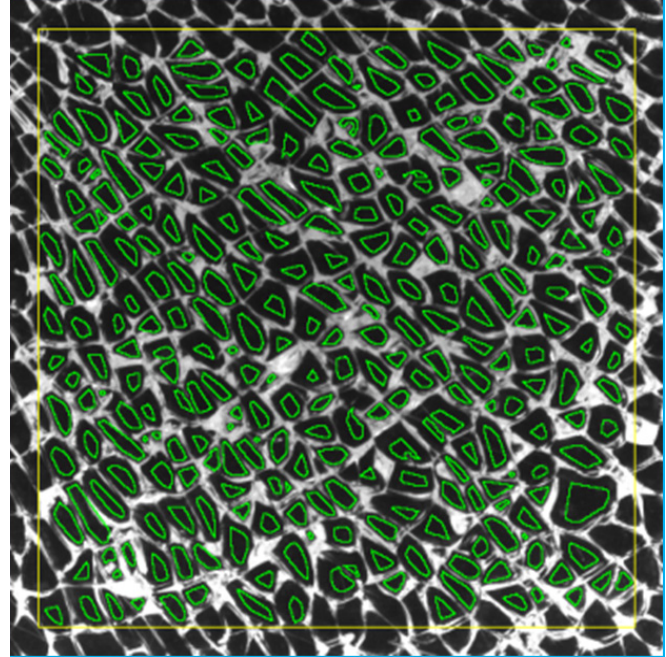


## TemperCHECK Benefits

- ✓ Automates fragmentation analysis
- ✓ Reduces testing time
- ✓ Reliable
- ✓ Enables you to respond to issues and improve quality by analyzing stored results for patterns
- ✓ Enables you to create customized reports

Sample - Result: PASS			
Check date	03/12/14 15.39	Piece Code	ED5690
Number of measurements	1	Oven	1
Production	43EDFG	Date of hardening	03/12/14 0.00
Batch	3	Customer	Private
Recipe	AUTO R 43 (03/1987)	Number of Symbol	2
Supplier	Glass Supplier	Type of glass	White
Material	Glass	Glass thickness	5
Order	3	Glass length	5.0
Row order	1	Glass width	5.0
Number CCU	2	Operator	Mattia DP

Measurement n° 1	
	Number of fragments 272.0 
	Max length fragment 8.07 mm 
	Max area fragment 16.78 mm2 
	Max weight 0.21 gr 



## Learn more

Discover how TemperCHECK can improve your glass quality. Contact Ryan McHugh of Integrated Automation Systems at 330.954.3070 or [ryan@optigas.com](mailto:ryan@optigas.com).

## INTEGRATED AUTOMATION SYSTEMS SOLUTIONS

OptiGas intelligent gas filling and testing  
 FastGas fast argon filling  
 ThermalCHECK tabletop gas fill verification  
 Slat-Rack breakthrough IG storage and handling  
 Free Fall automatic glass loader  
 Helantec Altimeter Professional pressure balancing

Helantec Leakfinder handheld gas detection  
 Helantec Gas Tester handheld argon testing  
 Helantec Smart 150 affordable accurate gas filling  
 Helantec Rapide L200 efficient fast gas filling  
 Helantec Helantec L500/L900 advanced gas filling  
 TemperCHECK automated fragmentation analyzer